

BIRMINGHAM | NOTTINGHAM | CAMBRIDGE | LEEDS | BRISTOL

consulting engineers trainees

## apprenticeship

**£Offer** - generous salary, day release to college leading to a HNC/HND qualification, on the job training working on 'live' projects, Degree options for those wishing to progress to Chartered Engineer status.

Couch Perry Wilkes the leading Environmental Building Services Consultancy in the UK provides sustainable building services engineering solutions to a wide range of market sectors including healthcare, education, research, local government, pharmaceutical and commercial clients.

We are looking to recruit exceptional and highly motivated **Trainee Engineers** to join our exceptional and highly motivated company.

### Key Skills

The ideal candidate will be educated to 'A' level at grade C including Maths/Science subjects. Consideration will be given to school leavers with high GCSE grades in these subjects. You must have a keen interest in energy efficiency, building physics, the use of renewable technologies, construction methods and building design. 16+ only please.

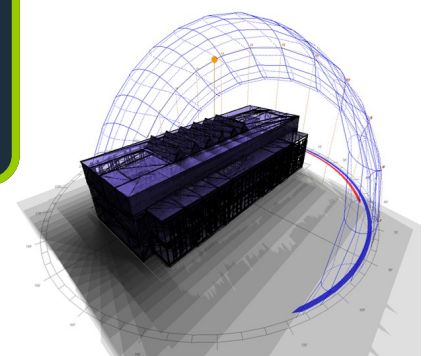
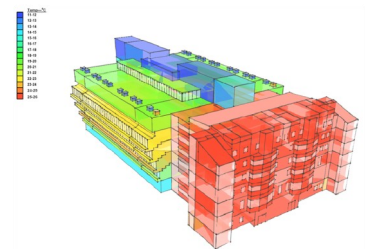
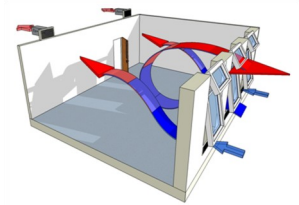
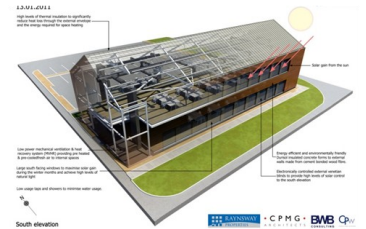
### Key Responsibilities

- Working as part of a multi-disciplinary team
- Advising clients and project teams on the integration of passive design solutions and renewable technologies into new build and refurbishment projects.
- Developing 2D \ 3D CAD layouts and visuals
- Building environmental modelling using market leading software applications

### Prospects

- Become part of a company that rewards hard work and enthusiasm.
- Investor in People accredited
- Unique structure which provides great prospects to move up the ladder

If you are interested in the above position please forward your CV to Nicola Joannides - [nicola.joannides@cpwp.com](mailto:nicola.joannides@cpwp.com) or at the address below: - Amington House, 95 Amington Road, Yardley, Birmingham, B25 8EP



INVESTOR IN PEOPLE

LOW CARBON CONSULTANTS

